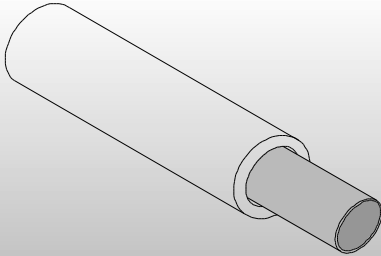


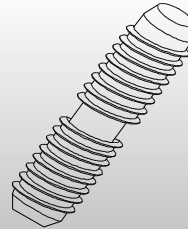


Continuous Handrail



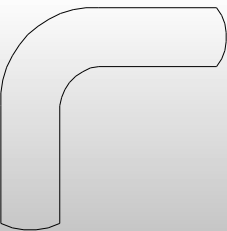
1 1/2" Round Handrail

- Aluminum Reinforced
- Available in 8' and 16' Lengths
- Available in White or Tan



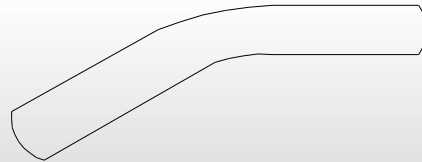
Self-Tapping Internal Coupler

- Use 3/4" Wrench to Tighten



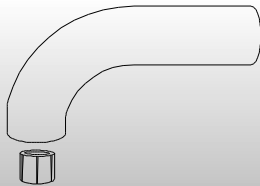
90° Elbow

- Inside and Outside Corners
- Two of these will wrap around a 4" post
- It will need a Coupler at each end
- Available in White or Tan



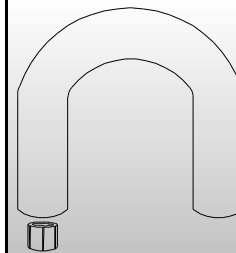
5°, 31°, 34° and 36° Elbows

- Levels out at top and bottom of stairs if stairs are at a 5°, 34° or 36° angle
- Needs a Coupler at each end
- Available in White or Tan



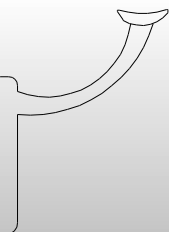
Wall Return (with Fastener)

- To return to a wall from Handrail
- Available in White or Tan
- Comes with Fastener; needs Coupler at one end.



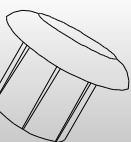
Post Return (with Fastener)

- Protrudes past a post and returns to it
- Available in White or Tan
- Comes with Fastener; needs Coupler at one end



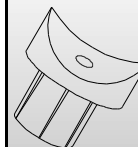
Aluminum Wall Mount

- Attaches Handrail to Post or Wall
- Includes (2) Stainless Steel Screws for Handrail
- Has (3) 1/4" Holes for Fastening to Wall or Post (*Fastener is not included*)
- Powder Coated Solid Aluminum
- Available in White or Tan



1 1/2" End Cap

- To cap off Handrail if not returning to a Wall or Post
- No Coupler Needed
- Available in White or Tan



Tee Connector

- Available in 0°, 5° and 36° Connectors
- Screws to Handrail
- Excepts Handrail to "T" off at a 90° angle
- No Coupler needed
- Available in White or Tan

Glue

- To glue accessories together
- 1.5 oz. tube of Vinyl Adhesive